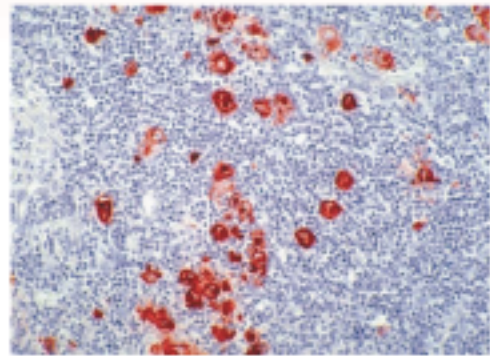


MY2300 Immuno-Histo Stainer



- Program can be changed at any time if required and can be made according to the user's requirements.
- More than one hundred programs can be made for standardized immunostaining and rapid special staining.
- One computer can control several Immuno-Histo Stainers simultaneously.
- To ensure the continuity and completeness of an experimental run, an external power supply can be provided.
- Such running conditions as running time and running progress can be clearly monitored at any time.

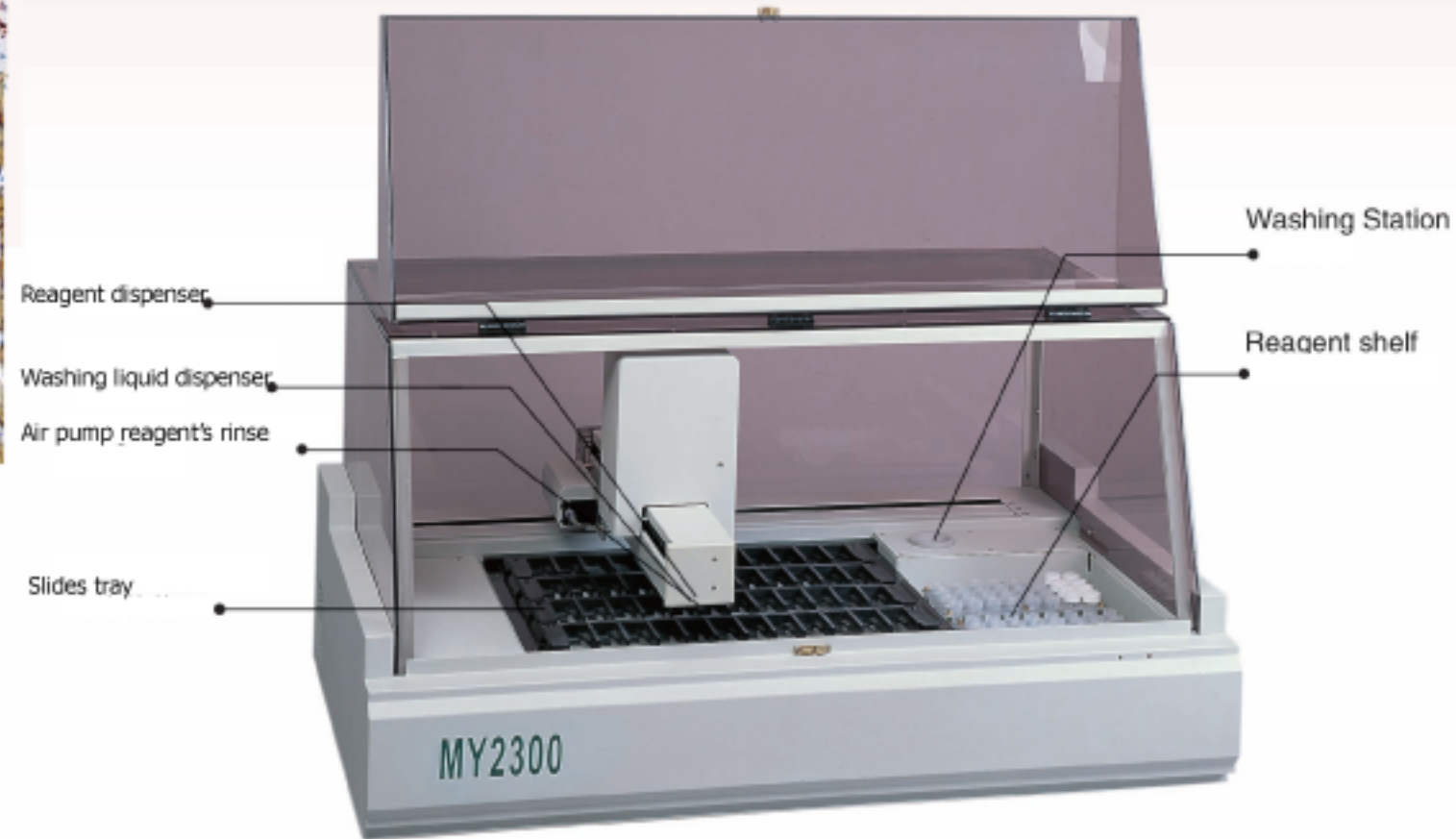
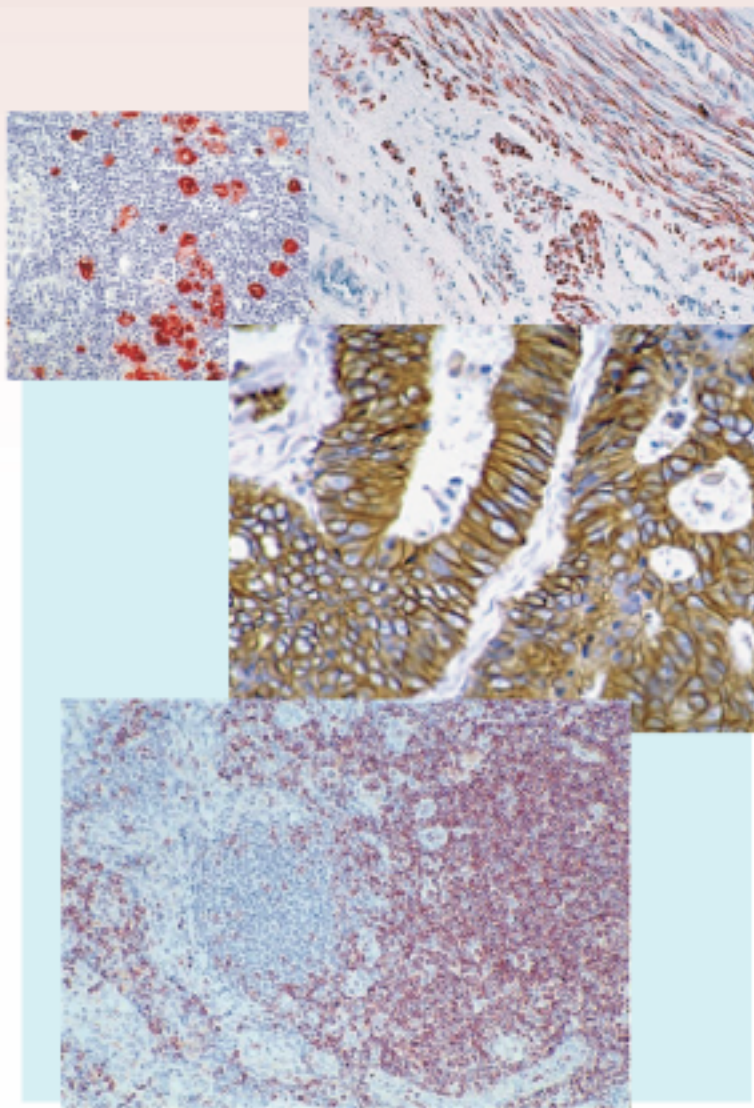
Technical Parameters:

- Capacity: 48 microtome sections and 64 kinds of reagents
- Reagent titration increment: 50ul, 100ul, 150ul, 200ul
- Outside dimensions(mm): 1015 × 665 × 520
- Power supply: 220V ± 10% at 50/60Hz or 110V ± 10% at 50/60Hz
- Power: ≤500W
- Weight: 116Kg

Histo-Line
Laboratories



MY2300 Immuno-Histo Stainer



Slice loading frame with convenient pin insertion.
Keep the slice smooth and stable.



64 kinds of reagent location frame.
The reagent bottle can be taken out and place the antibody in the refrigerator after its usage.

- Open the system, suitable for reagents of different company
- Suitable for various kinds of specimen: paraffin, refrigerated and punctured microtome sections, cell smear and marrow microtome section
- Precise micro dropping rates of reagent adjustable to the minimum of 50ul, thus saving expensive reagent.
- Different dropping rates of antibody can be set for different tissue section.
- Excellent overall sealing keeps the inside environment wet.
- Contents are under the protection of secret code.
- The dropper point surface is Teflon treated and can be thoroughly cleaned to avoid cross contamination.
- Movable scavenging gentle air blows off the liquid residue on the tissue sections.

**Histo-Line
Laboratories**

Gianfranco Illuminati
Via Brembo, 27
20139 Milano
Italy
Tel. +39 0255230061
Fax +39 0255213764



The clean-out opening of the drop-tube can make both the interior and exterior wall of the drop-tube cleaned and avoid the cross pollution.



The subarea location of the slice assures that the minimum reagent quantity exerts its maximum effect.
1-3 tissue can be dyed once at the same time.